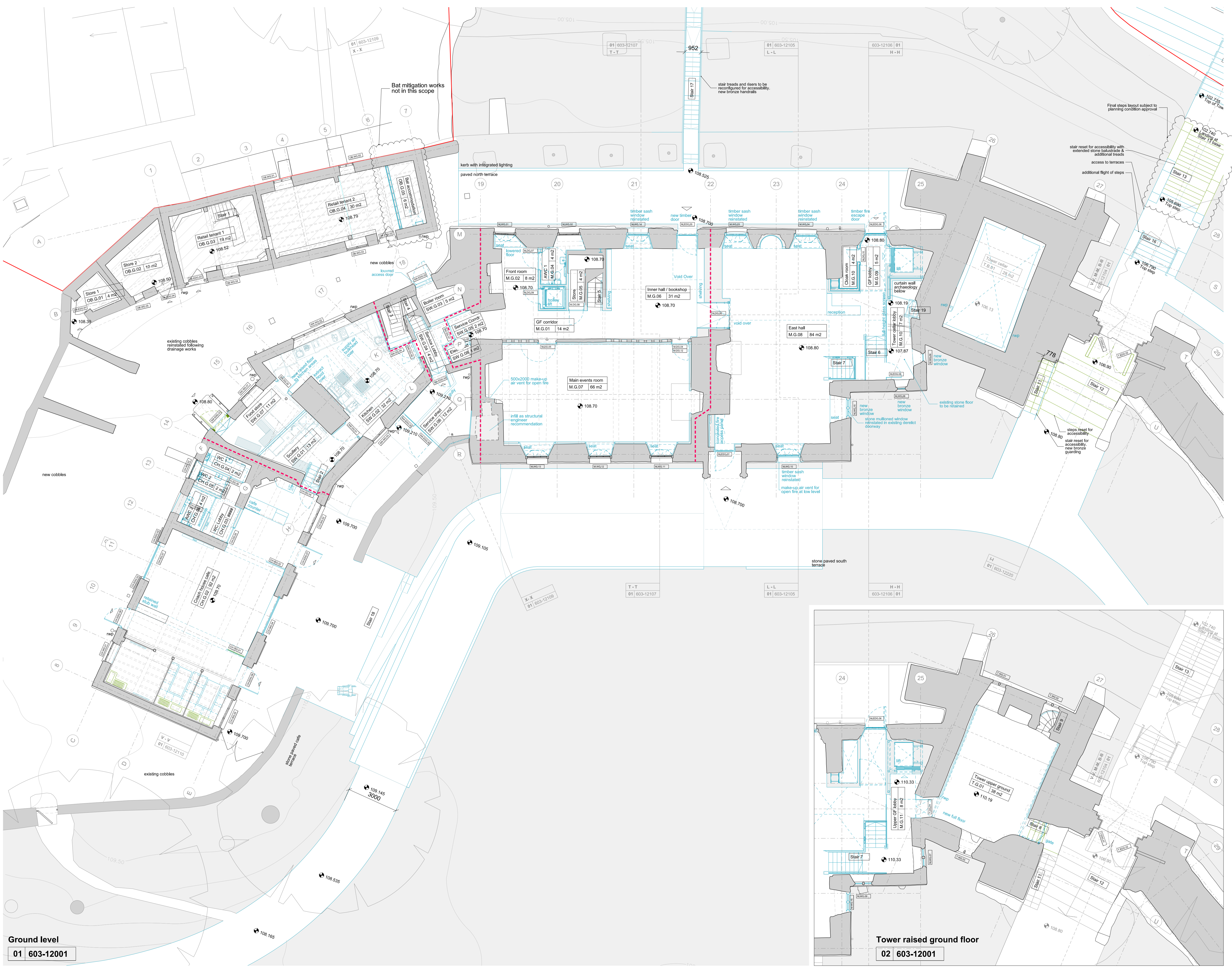


DO NOT SCALE FROM THIS DRAWING.
CONTRACTOR TO CHECK ALL DIMENSIONS ON SITE.
ANY DISCREPANCIES TO BE REPORTED TO THE ARCHITECT IMMEDIATELY.

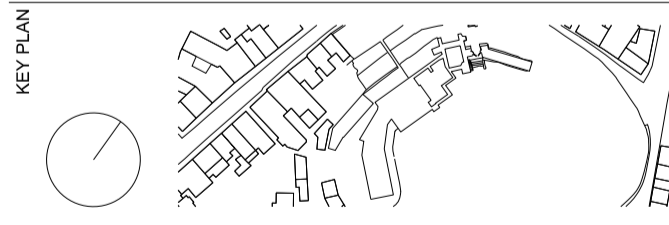
COPYRIGHT RICK MATHER ARCHITECTS LLP ©

- KEY
- SITE BOUNDARY
 - ▒ EXISTING STRUCTURE / PARTITION
 - ▒ NEW STRUCTURE / PARTITION
 - EXISTING ELEMENT
 - NEW ELEMENT
 - EXISTING REFURBISHED OR RELOCATED ELEMENT
 - ▒ NO UPGRADE, FIRE ALARM SYSTEM & BAT MITIGATION WORKS ONLY
 - 30 MINUTE FIRE SEPARATION
- NB REFER TO 603-6000-P10 & SERVICES ENGINEERING INFORMATION FOR FIRE STOPPING



REVISIONS

REV	DATE	DESCRIPTION
P12	28.02.16	PRE-TENDER TEAM ISSUE
P11	19.10.16	STAGE 4 START-UP ISSUE
P10	09.12.15	FINAL STAGE 3 ISSUE
P9	24.11.15	PRELIMINARY STAGE 3 ISSUE (HCT ONLY)
P8	09.11.15	CHANGES AS CLOUDED
P7	23.10.15	CHANGES AS CLOUDED
P6	07.10.15	CHANGES AS CLOUDED
P5	03.09.15	CHANGES AS CLOUDED
P4	07.08.15	CHANGES AS CLOUDED INCL STAIR NUMBERING
P3	17.07.15	CHANGES AS CLOUDED
P2	09.07.15	CHANGES AS CLOUDED
P1	02.07.15	PLANNING PERMISSION



BILLING

RICK MATHER ARCHITECTS ©

123 Camden High Street London NW1 7JR
T: 020 7284 1721 F: 020 7281 7626
info@rickmather.com www.rickmather.com

JOB
HAY CASTLE
HAY-ON-WYE, HEREFORDSHIRE, HR3 5DG

TITLE
PROPOSED
GROUND LEVEL

DRAWN	JOB #	DRG #	REV
JS	603	12001	B1

CHECKED	SCALE@A1	SIZE	DATE	REV DATE
JA	1:100	A1	JUN 15	03/03/17
	1:200	A3		

Ground level
01 603-12001

Tower raised ground floor
02 603-12001